

INDIVIDUAZIONE SCHEDE E GRADI DI PROTEZIONE

ADEGUATA A:  
Variante secondo stralcio del Centri Storici e delle Corti Rurali adottata con DCC 197/2003 e approvata con DGRV 3241/2007

progettista  
dott. arch. Marco Zandonà

collaboratori  
dott. arch. Maria Elisabetta Gasparrini

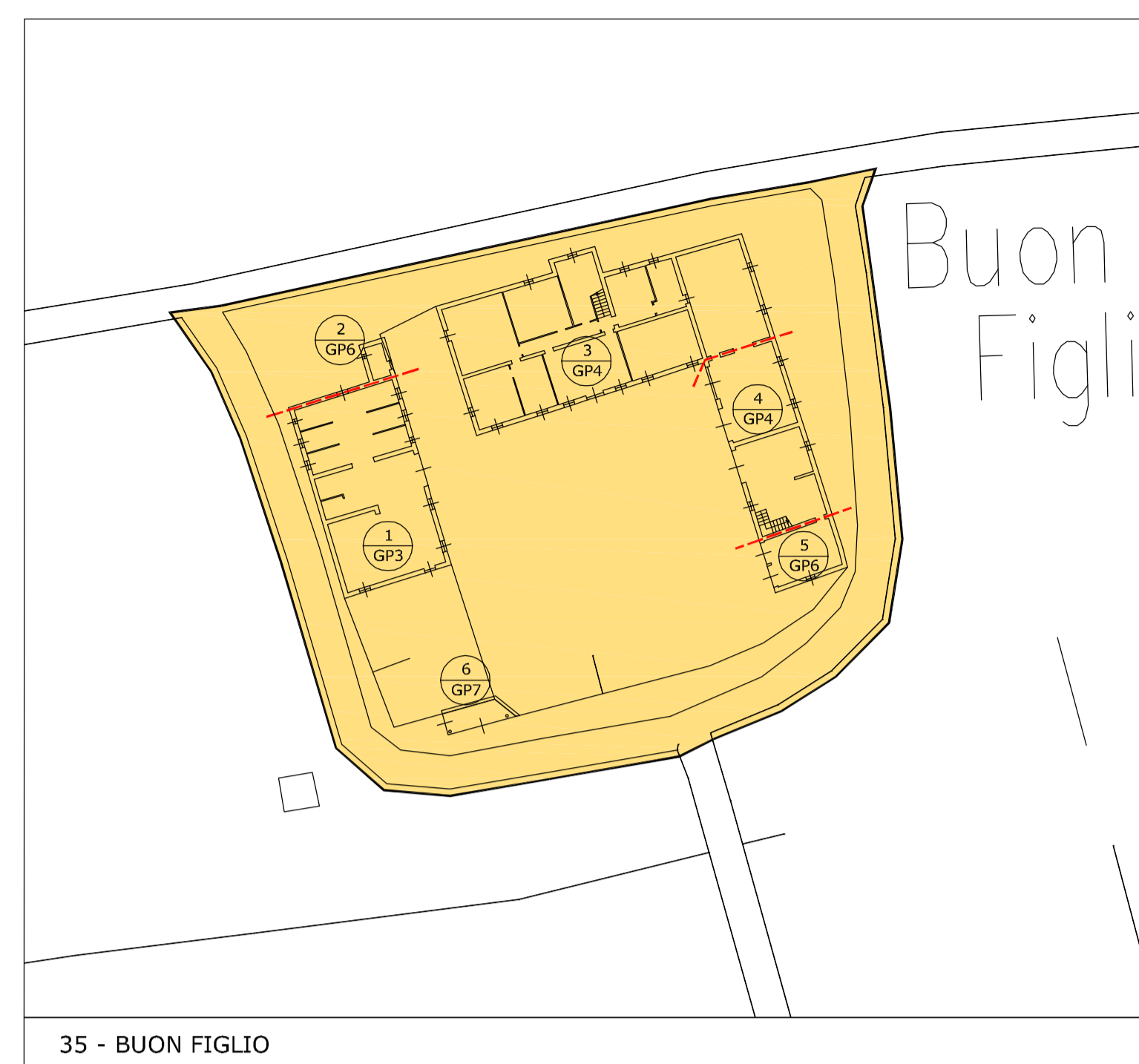
DATA ottobre 2013  
SCALA 1:500

SINDACO  
SEGRETARIO

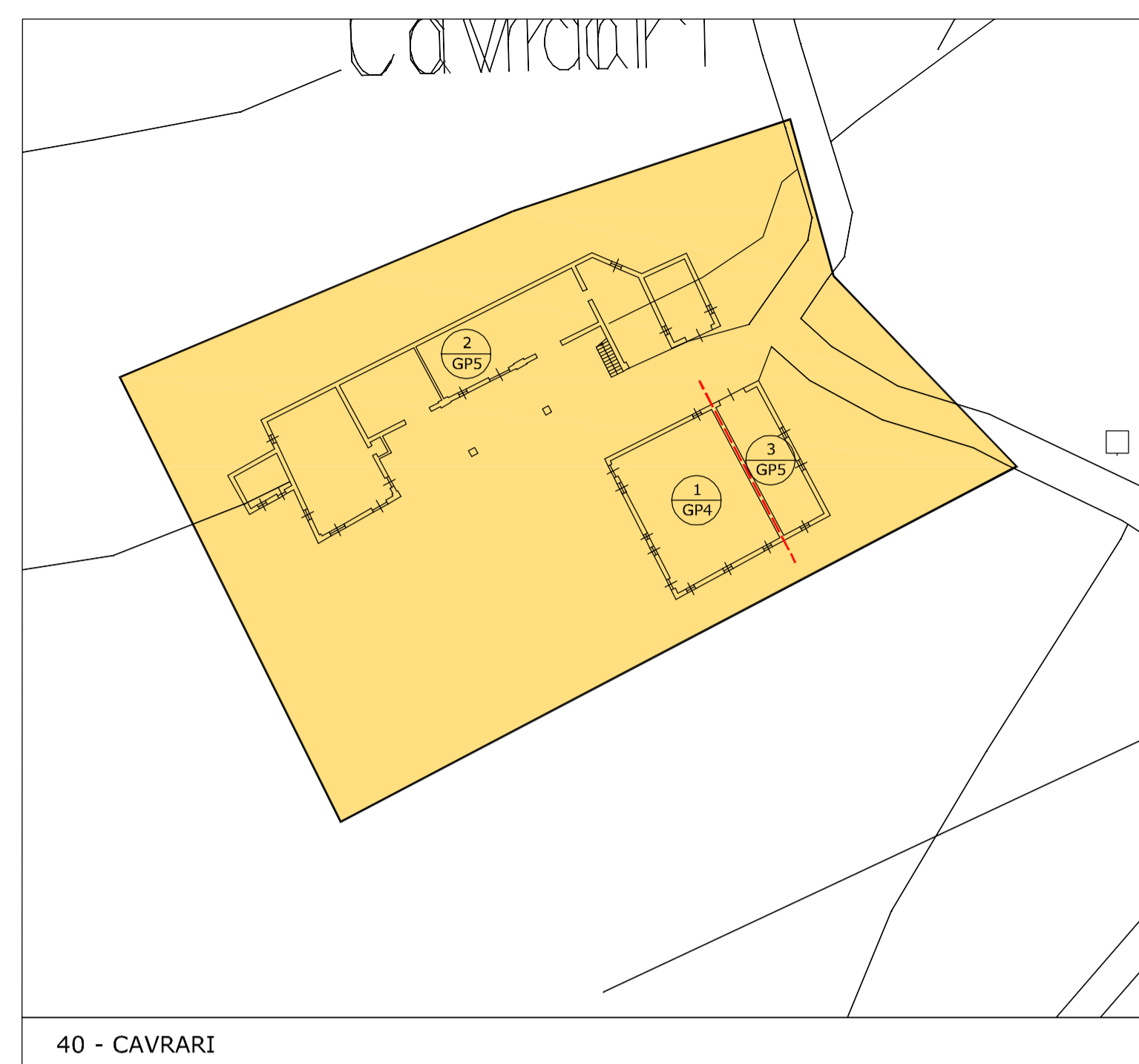
- 35 - BUONI FIGLIO
- 36 - SORCE' DI SOPRA
- 38 - CAMPAGNOLA NORD
- 40 - CAVRARI
- 41 - CA' DELL'ORA
- 44 - SAN FELICE
- 45 - CONVENTO
- 46 - SAN GIACOMO
- 48 - I TRONI
- 49 - SERE
- 50 - SOTTO MONTE

LEGENDA

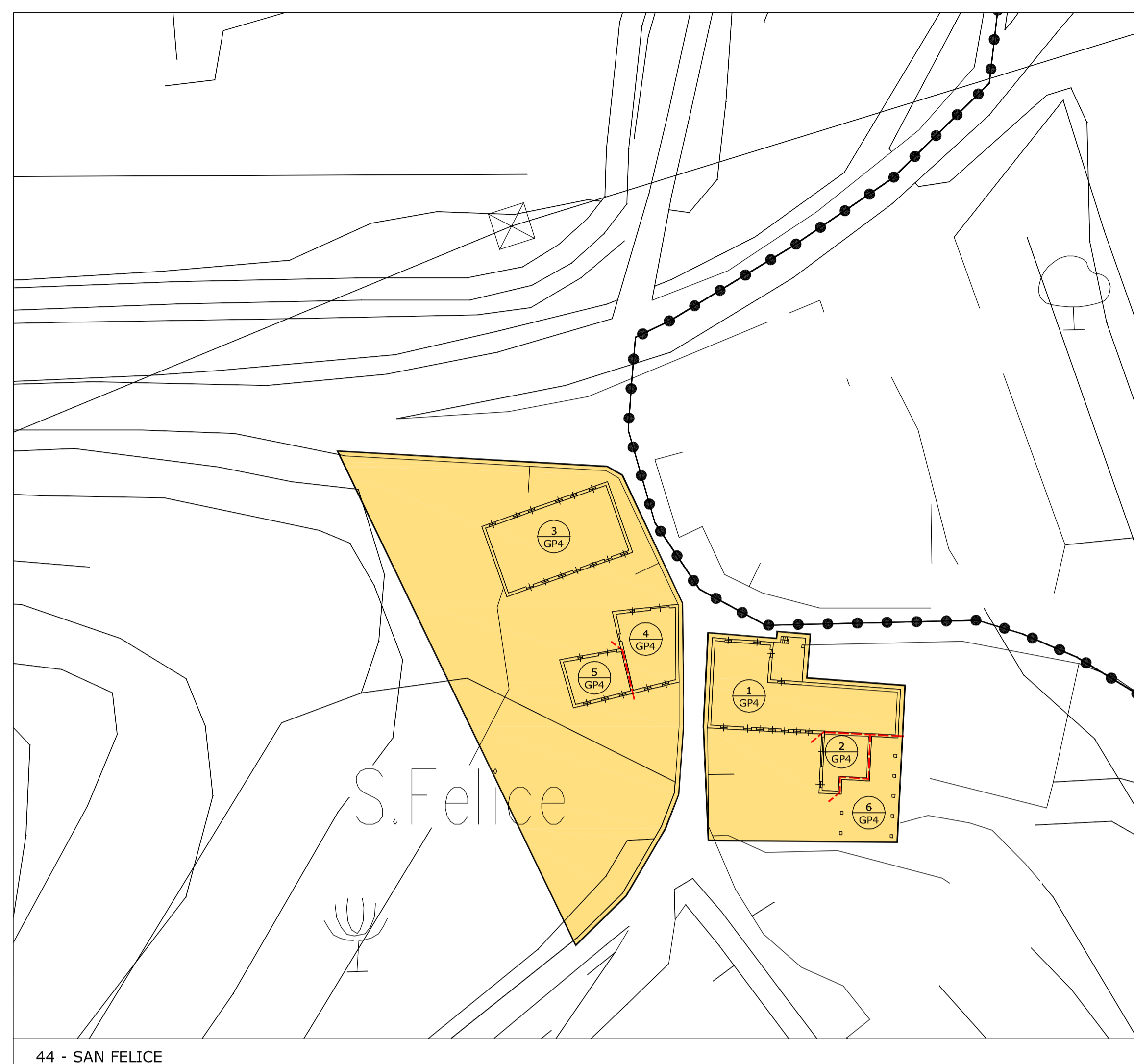
- Identificazione scheda edificio
- numero riferimento scheda B
- grado di protezione
- ambito Corti Rurali (art. 10 L.R. 24/85)
- confine comunale



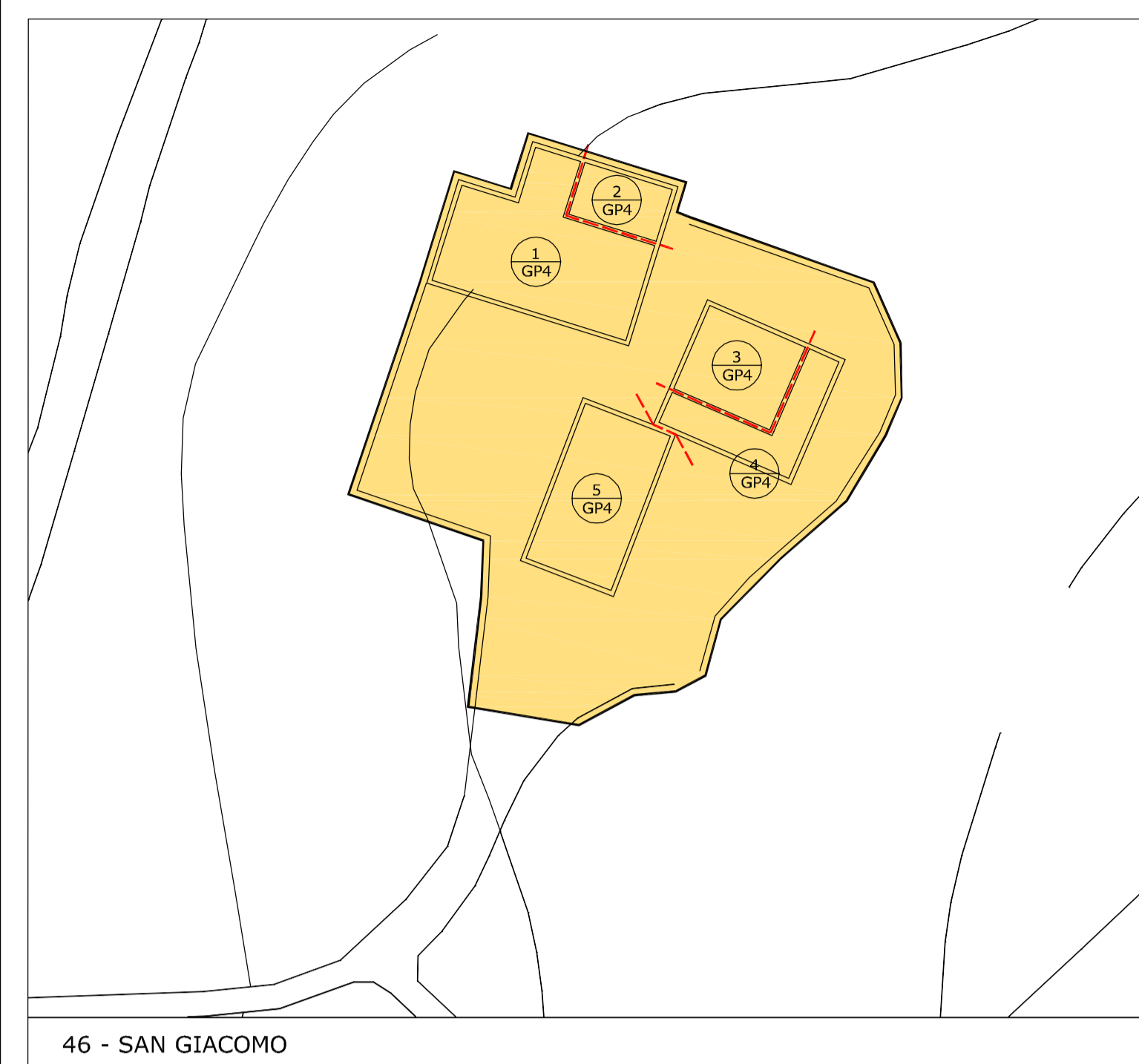
35 - BUONI FIGLIO



40 - CAVRARI



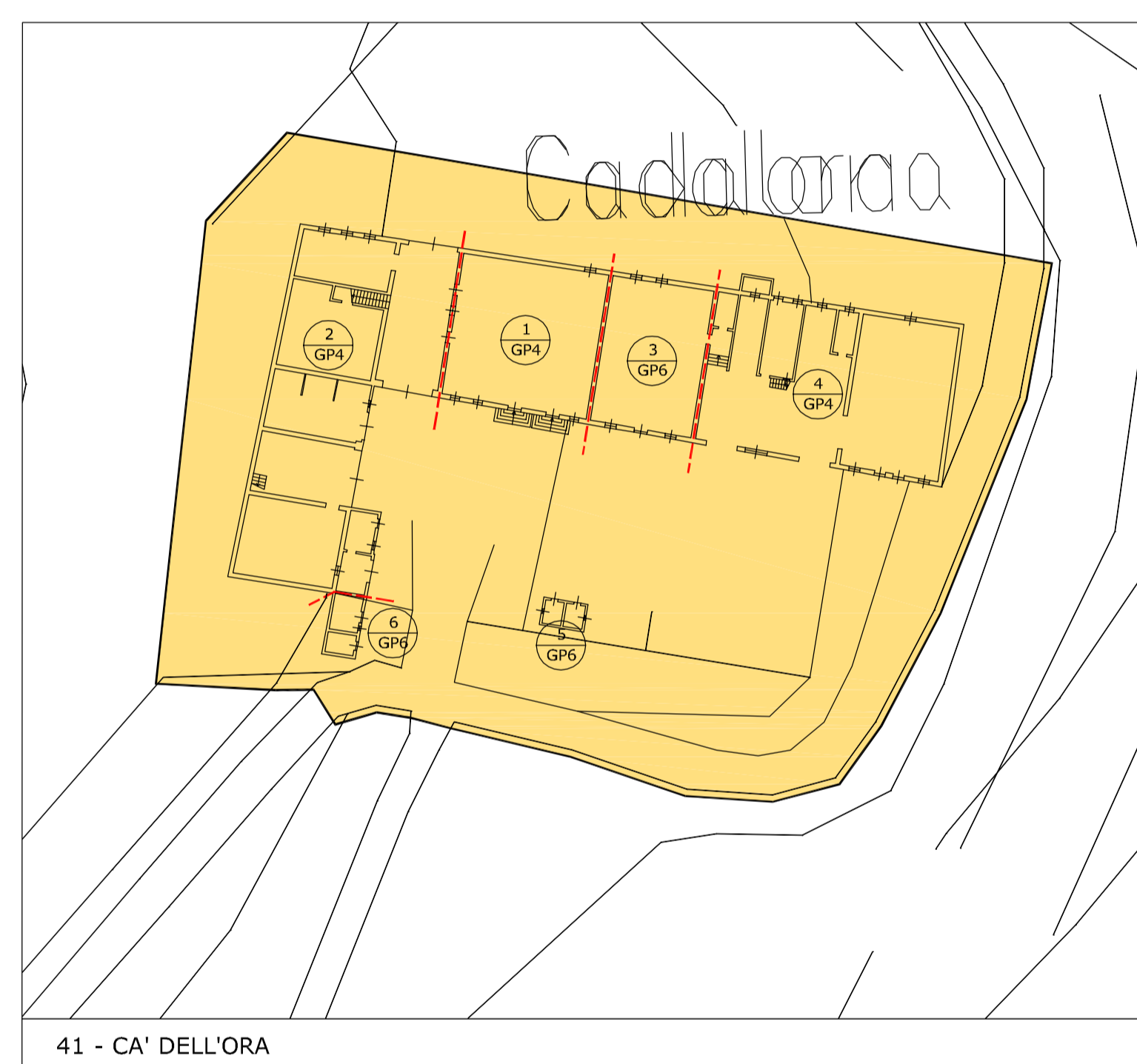
44 - SAN FELICE



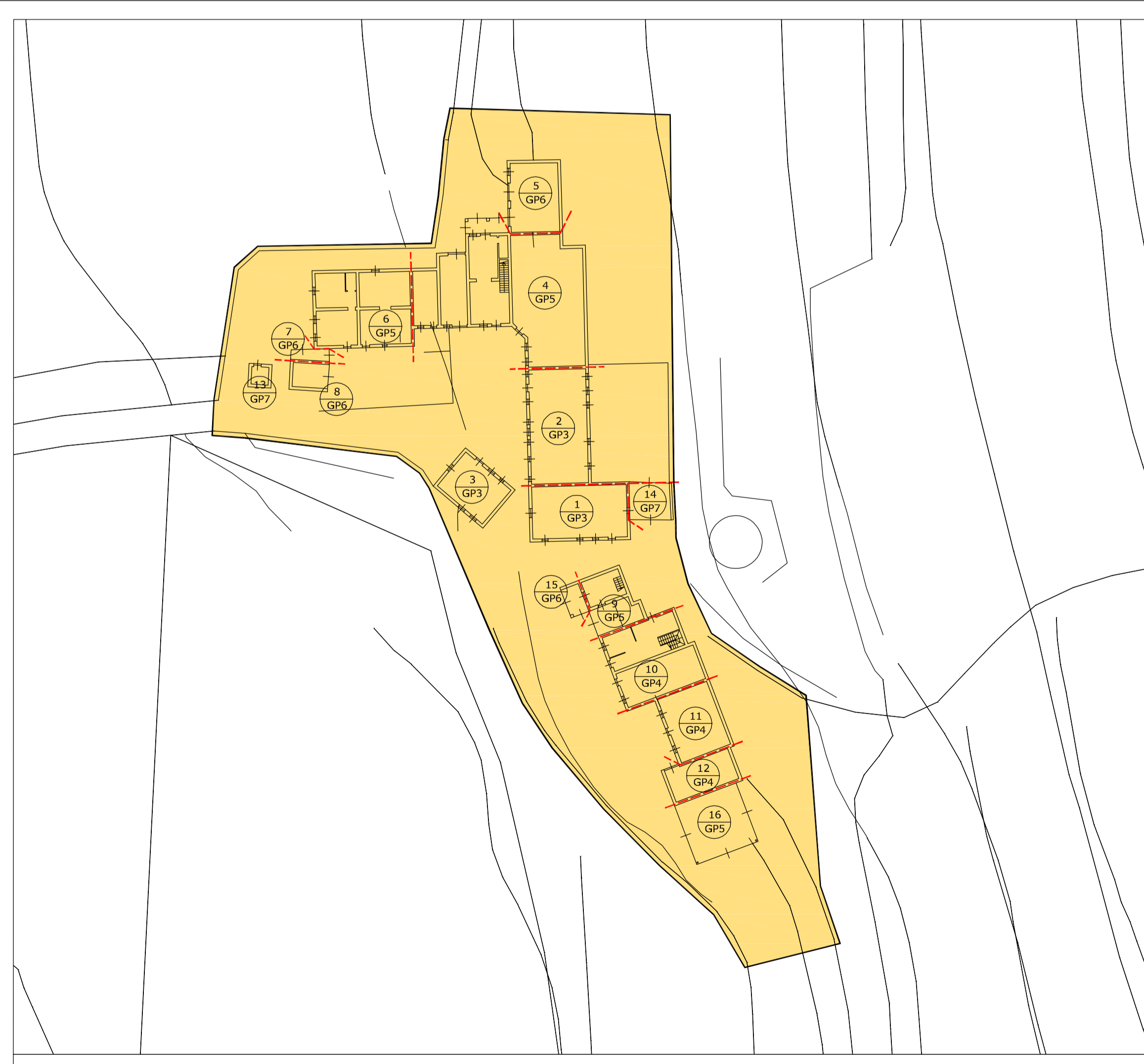
46 - SAN GIACOMO



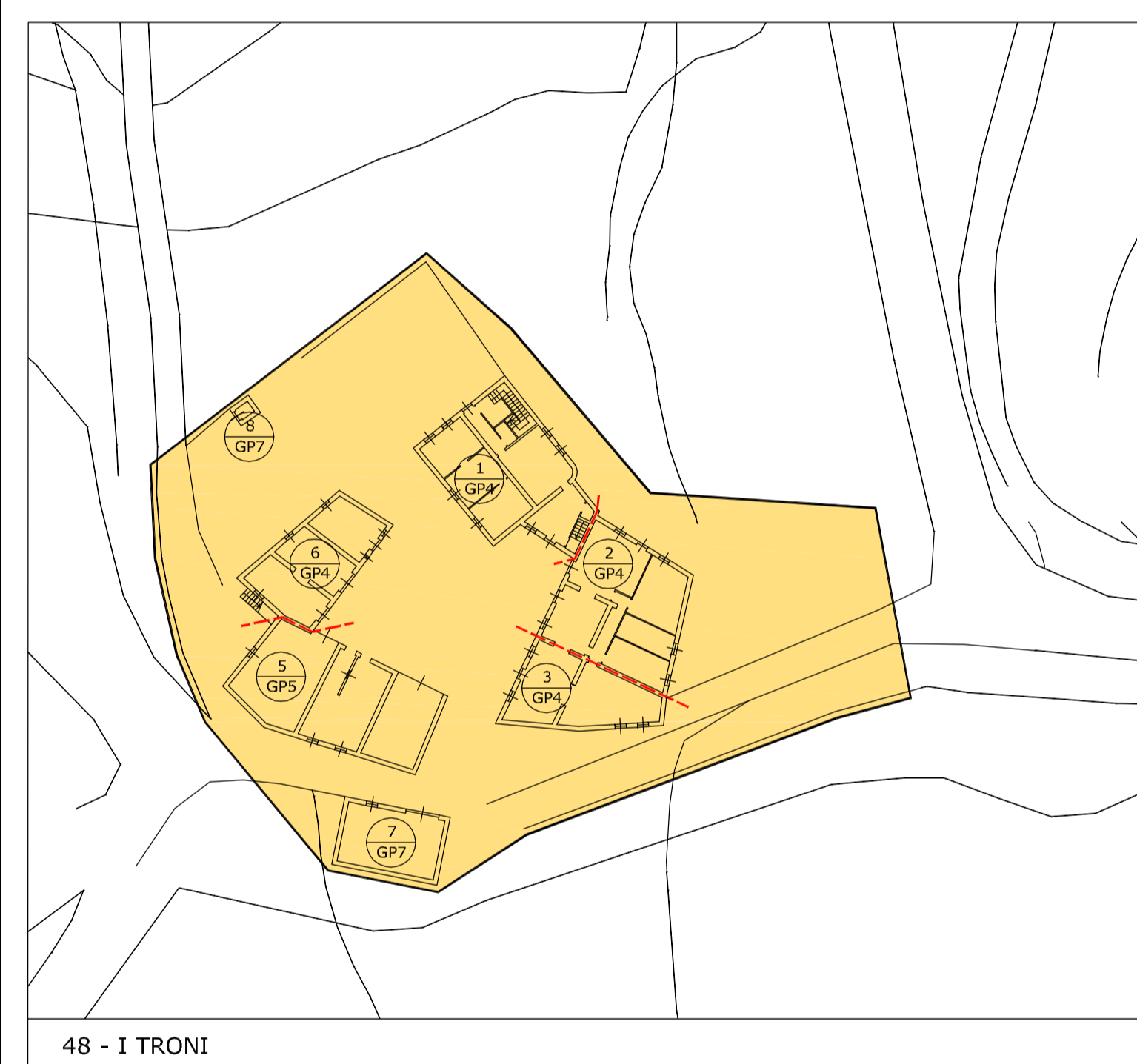
36 - SORCE' DI SOPRA



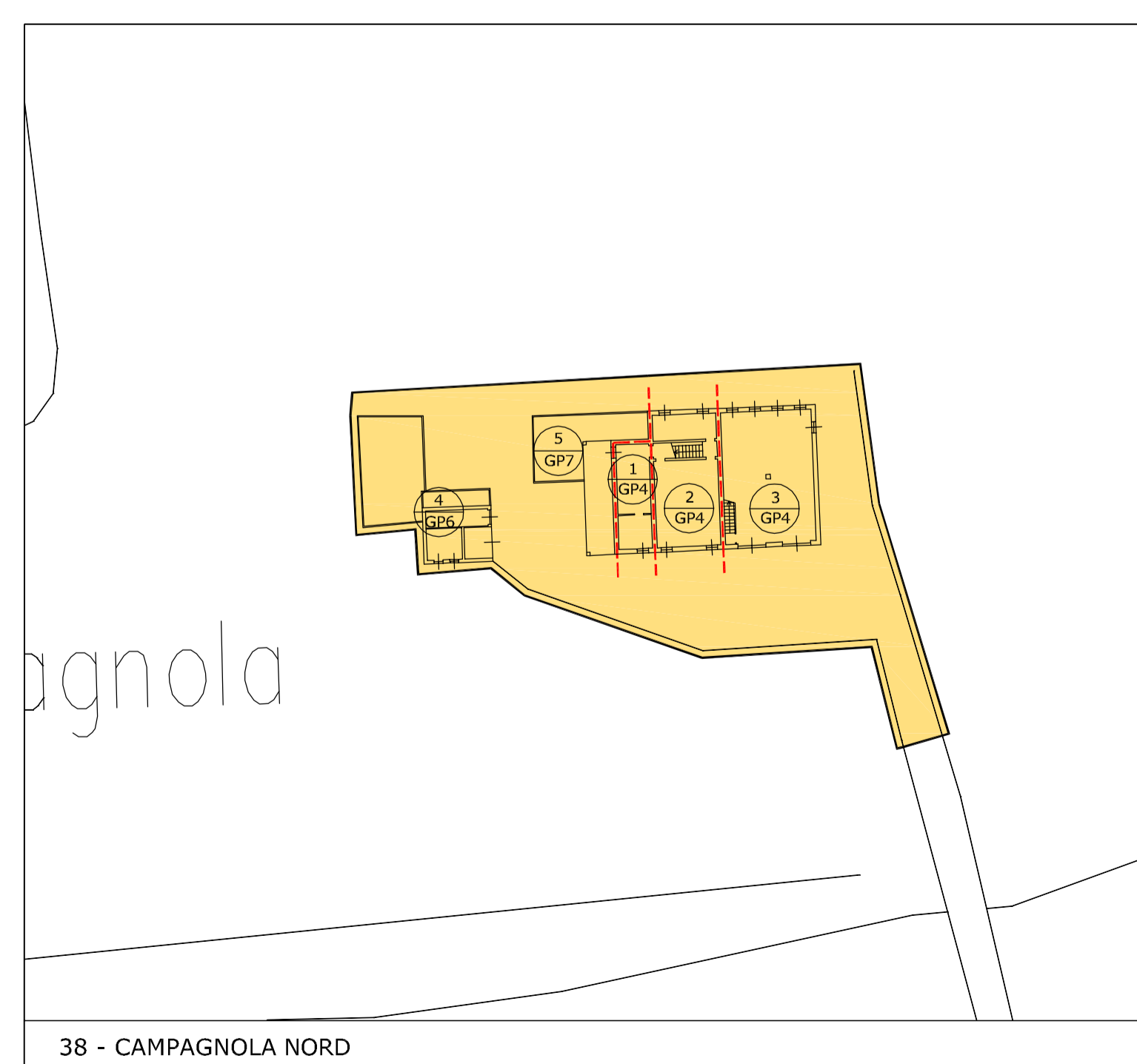
41 - CA' DELL'ORA



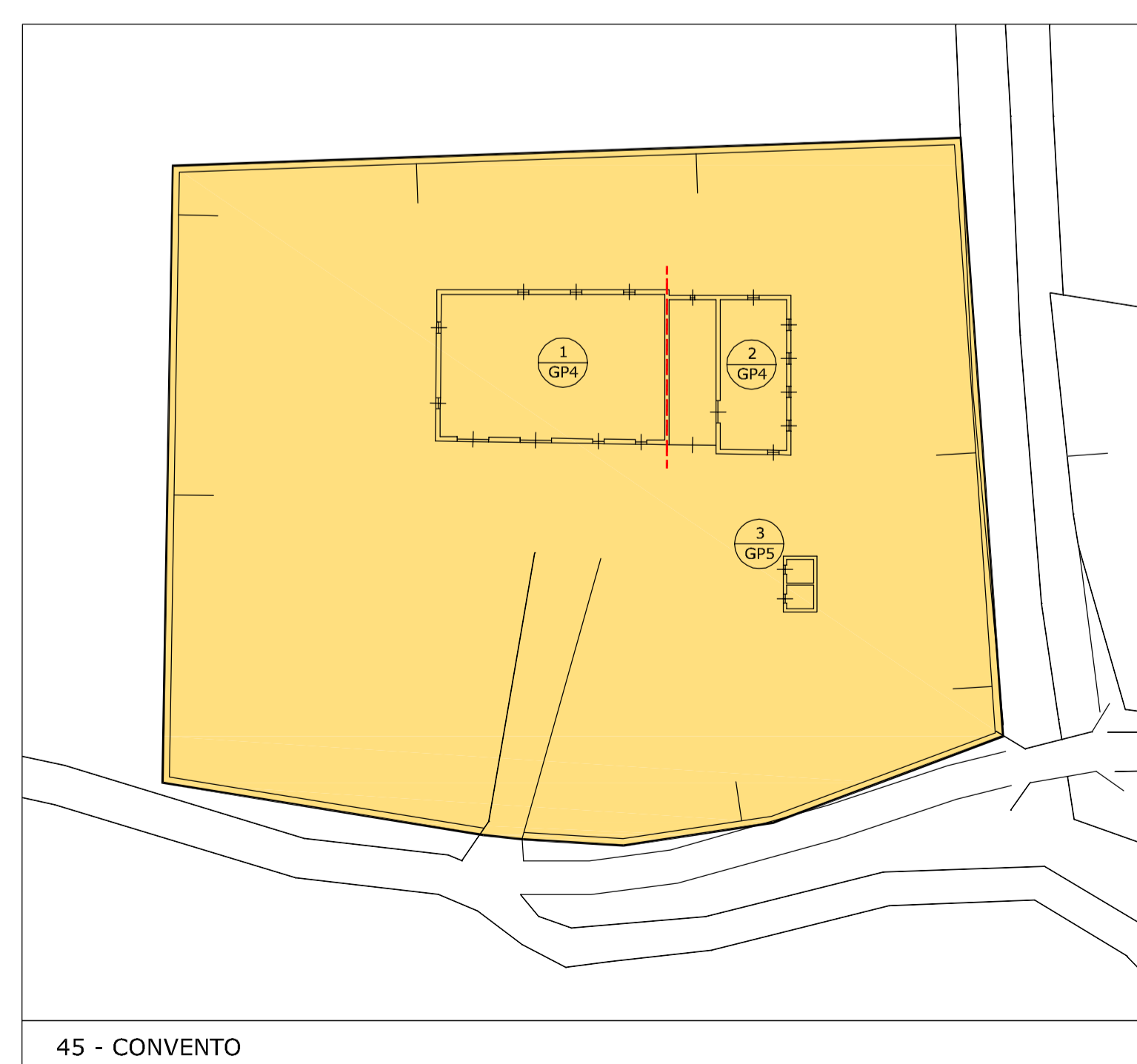
50 - SOTTO MONTE



48 - I TRONI



38 - CAMPAGNOLA NORD



45 - CONVENTO



49 - SERE